

Microsoft FrontPage 2000

Creating Cascading Style sheets

In this lesson you will learn how to:

- *What is a Style*
- *Create an Embedded Cascading Style Sheet*
- *Create Inline Style Sheets*
- *Use FrontPage Style Sheets*
- *Create External Link Cascading Style Sheets*
- *Modify your Style Sheets*
- *Amend Tables with Cascading Style Sheets*

In order to get the most out of this lesson. Save and print out a copy and work alongside it as we go through the lesson.

Open up **FrontPage 2000**

Start a New Web call it Practise

Start a New Page

Styles

FrontPage 2000 can use three different kinds of Style Sheets.

Inline

Embedded

External.

To use an External Style Sheet you create the Style and then link to it for your pages. This kind of Style can be used for all of your pages.

An Embedded Style Sheet is good for one page only.

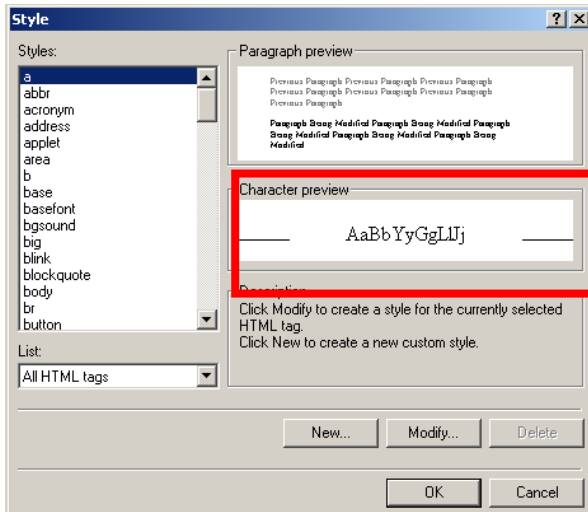
An Inline Style Sheet is the least used, it can amend a style but you will have to change the Style of everything the Style is used for, which is why it is so least used.

A Style is the formatting, background, text colour and font. Setting Styles to your web saves time as you will not have to update the formatting every time, unless you use the Inline Style Sheet. Setting Styles to your web pages produces neater code which will make your website load faster.

Embedded Style Sheet

Create an Embedded Style Sheet

Select Format, Style

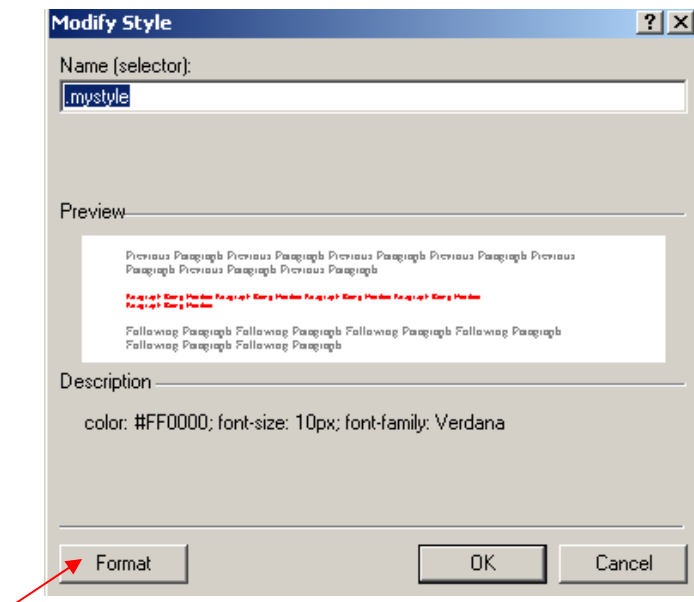


You can see in this box that there is already a Style added.
 The Style I am working with is shown, in the box.
 FrontPage 2000 offers a Preview of the Style I am working with.

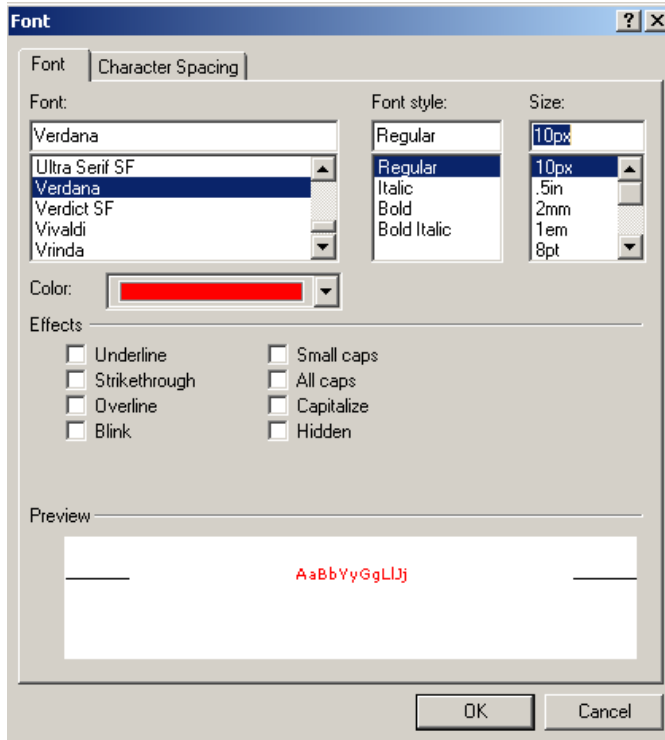
Click on new. We will create a custom Style.
 In the Name Selector Box, you will have to give your Style a name.

When you create a Style you must always precede the Selector name
 with a period ‘.’

Add the name with no spaces in between the words.



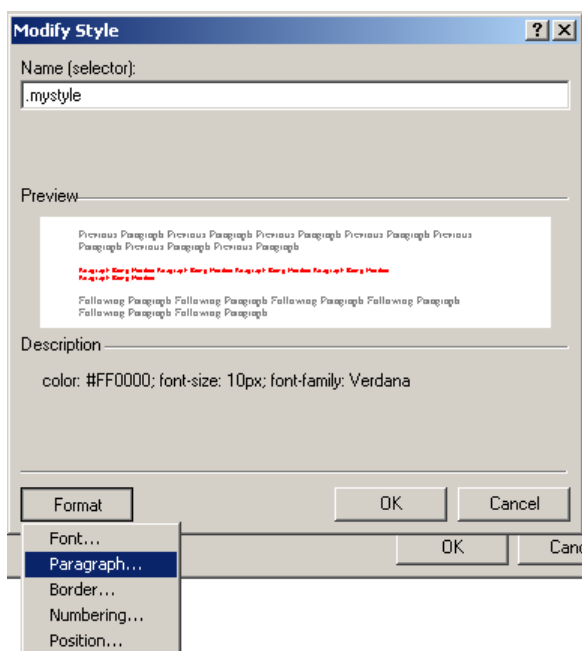
Click on Format as shown



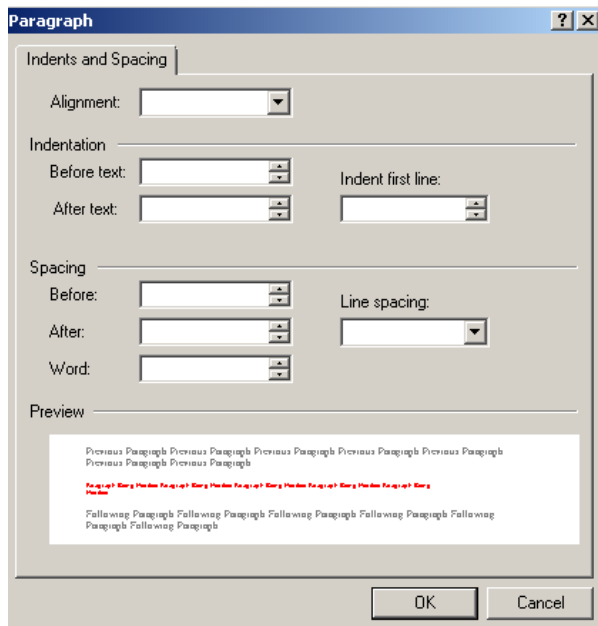
The Font Colour I have changed to Red, I've changed to Font to Verdana and the size 10 pixels as web pages work in pixels. But it does not matter if you want to use Points. FrontPage 2000 will update this for you.

Set your style to how you want the text to look. Note there is a Preview Box on the bottom.

Now we have created the Font or Style that we want for our web page.



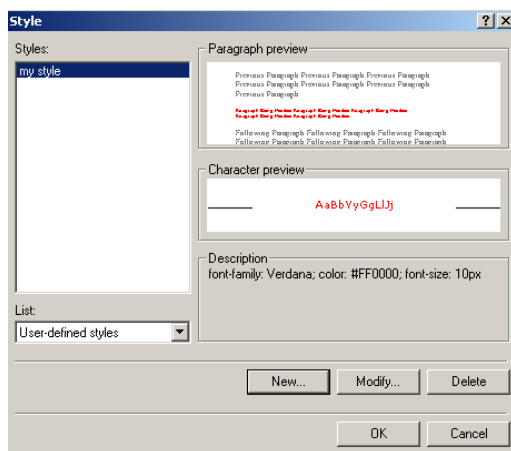
Click on OK and we are taken back to the Selector box. We can now work on the Paragraph, so select Paragraph as shown.



You can chose the Alignment of your text. And the Indentation as well as the Spacing. If you want to make changes to the Paragraph set them now. Click on OK

Next on the Selector Box we can chose to work on the border, numbering and position just like in Word.

Set you're formatting for your text and click on OK. And then Click on OK on the Style Box.

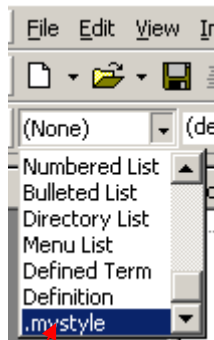


Click on OK when you have finished with your formatting changes.

To Apply the Style.

Select or highlight the text that you want the Style to apply to and then click on the far left hand corner of the top of your screen on the last toolbar to the Style box.

You should find your Style in there. If it is not, go back and modify your Style adding a period before the name, and make sure there are no spaces in the name of the Style.



To adjust the background colour go into the border option, then Shading and you can access it from there.

Embedded Style Sheets are formatting in the **Head** of the HTML. And that is why they only work on one page.

Inline Style

To create an Inline Style that is only good for the current element.

It is much better to apply an Embedded or External Style.

You can change the Style using the usual formatting tools. Whenever you have the need for the Inline Style. For instance, to highlight a particular word in a certain way.

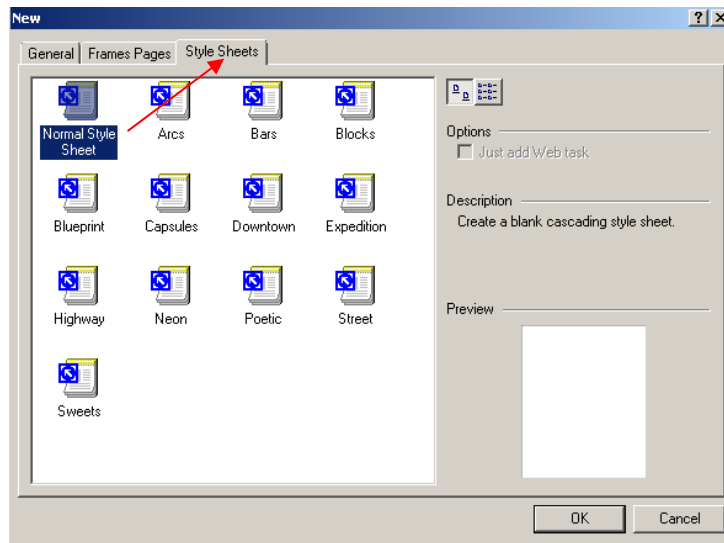
External Style

An External Style is linked too.

FrontPage 2000 has External Styles built in.

To access the sets of style sheets in FrontPage 2000
Click on File/New/Page

A box appears giving you options of what kind of page to apply. Click on the Style Sheet Tab.



Take awhile clicking on each one to see what the Style has to offer.

Choose one and then check out the HTML code to see what its like.

To give you a better understanding of how CSS works.

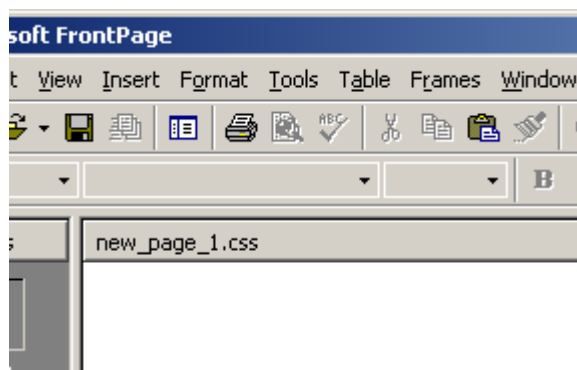
These Style Sheets are fine if we like what FrontPage2000 has to offer but you will probably want to create your own External Style Sheet.

Create a CSS Style Sheet

To create one from scratch, click on File/New/Page, click the Style Sheet Tab and this time chose Normal Style Sheet.

A new blank page will appear along with a small Style Box Toolbar.

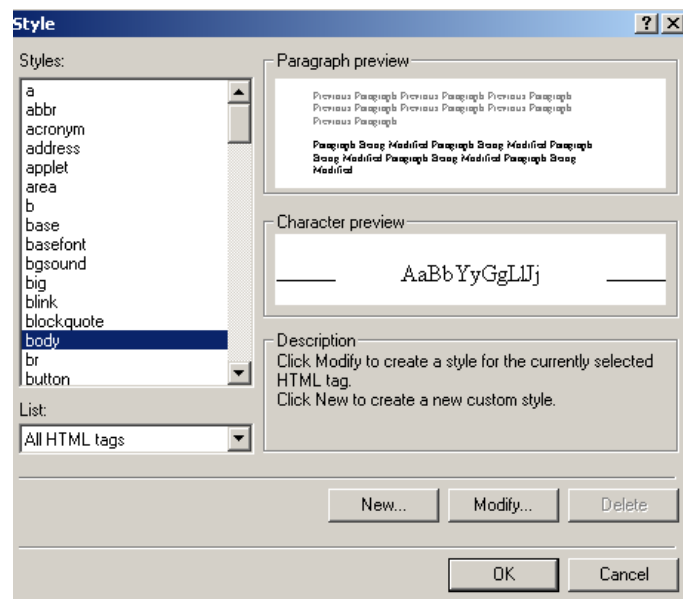
The top of the page will be a .css page



Click on the Style Toolbar and then Choose an element that you want to apply a style too.

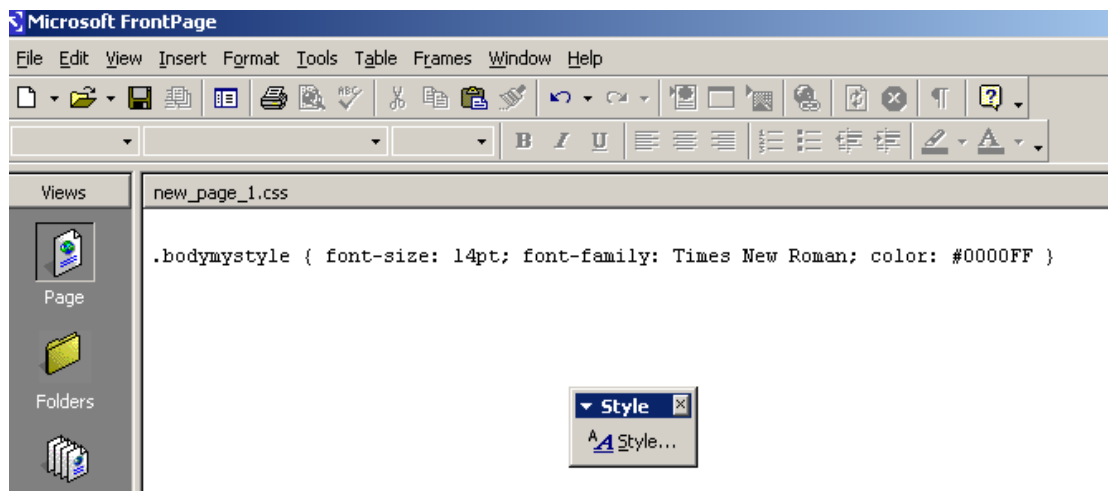
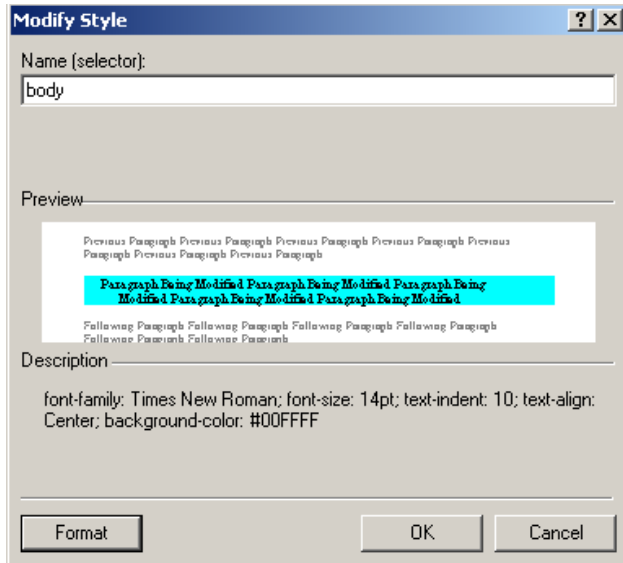
In the styles box that will appear, for example if you want to work on the body of the Style click on Body.

This is a good place to start so click on it now and then Click on Modify.

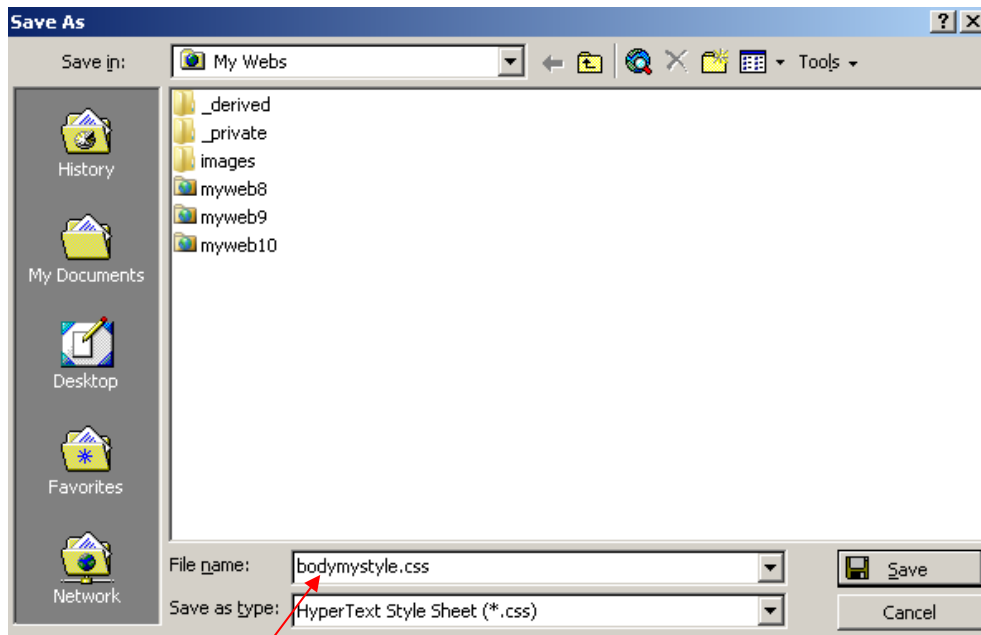


Apply the Style that you want to the text, border, background, shading etc. a tip is that not all browsers will use your text type, so you should apply more than one text type to your style if it is unusual.

Click on OK when you have finished with formatting your style.



The Style will appear on your page in code. To save your Style, click on Save as in the File menu, save your style as a .css file.

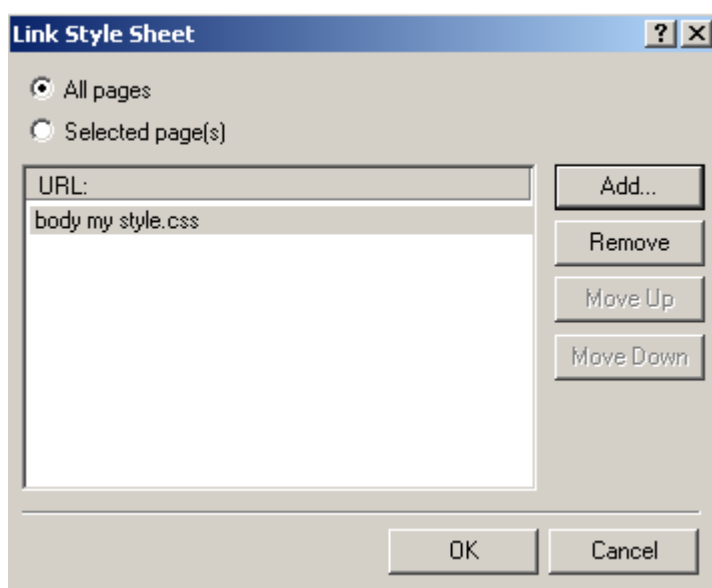


When you want to access your Style and use it for your pages, open up a web page.

Select Format/Style Sheet Links from the menu, if you do not see it there, the menu will open up if you give it time.

You will get a Style menu box open up.

If you do not see your Style in there click on Add and you will be taken to the hyperlinks box, where you can click on your style to add it to the link style sheet box. See below.



Modify Style Sheet

To amend an External Style Sheet open up the .css style sheet.

Click on Format/Style and modify the style.

Tables & Styles

One thing about an External Style Sheet is that you will need to add it to each section of your table, if tables have been used.

CSS only works this way in FrontPage 2000. You would need to get a whole book on the different ways of working with CSS if you want to get really involved with it. But maybe now you do know how to create a Style Sheet for FrontPage 2000.

I hope you can see that you can edit your web pages using the CSS you have learned to create a universal website.